







Priced From  
**\$506,990**

**3 Elevations Available**

-  **2,567+ Sq. Ft.**
-  **4 - 5 Bedrooms**
-  **2.5 - 4 Bathrooms**
-  **2 Car Garage**

Tailgates in the South are different. We dress for them. Not just in team apparel, we might even put on an actual dress. We cook for them and I'm not talking chips and dip. We show up ready to show out. To cheer on our teams and connect with fellow fans. And we do it all with our characteristic Southern Charm, Hospitality and Grace. If you haven't been to a Tailgate in the South, you haven't been to a tailgate. You've been to a party in a parking lot. Our Tailgate plan embodies the best example of how Southerners take something ordinary and elevate it to something extraordinary. This plan is elevated to four bedrooms, three baths and a study. Extraordinary lives live here.



**A**



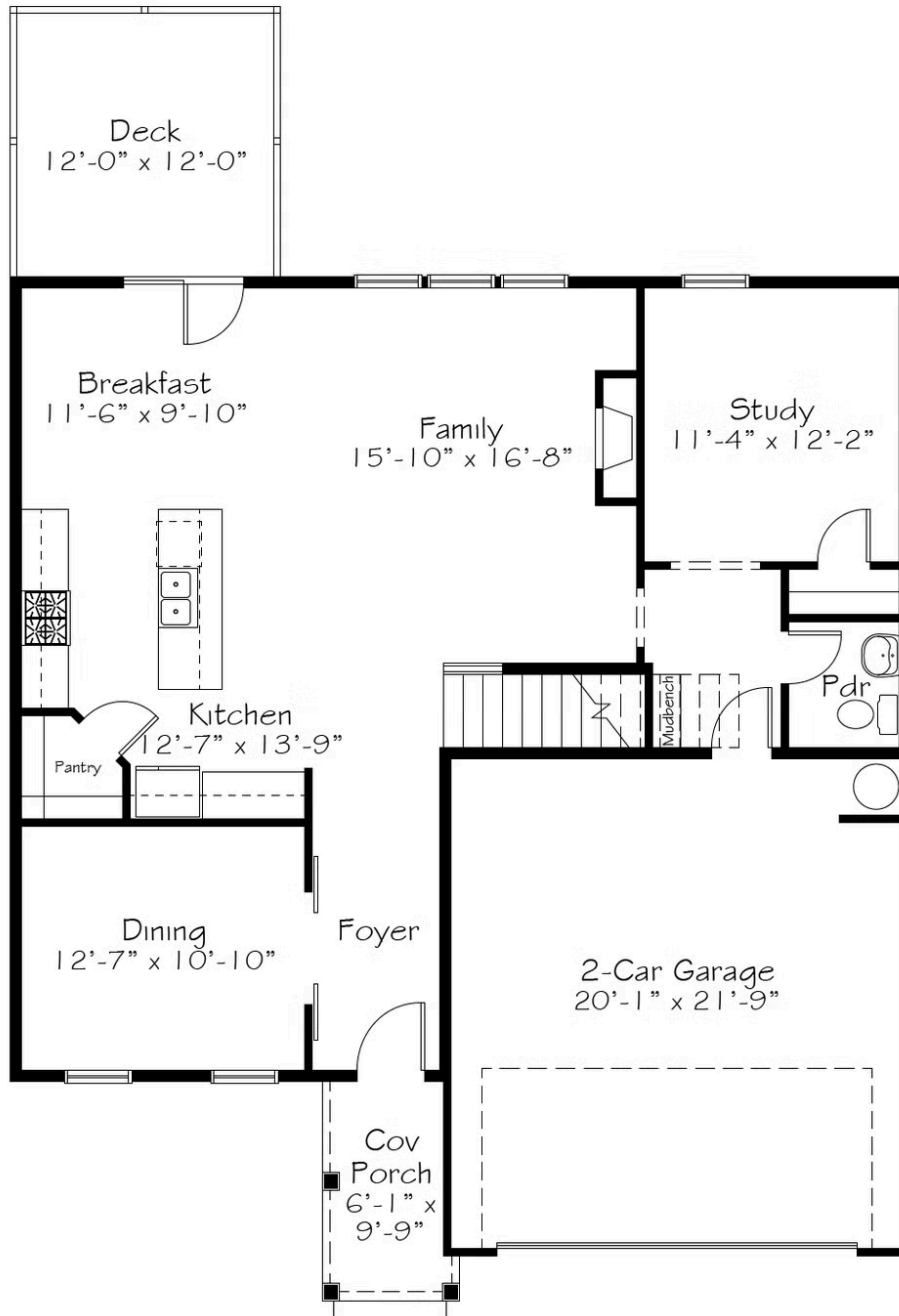
**B**



**C**

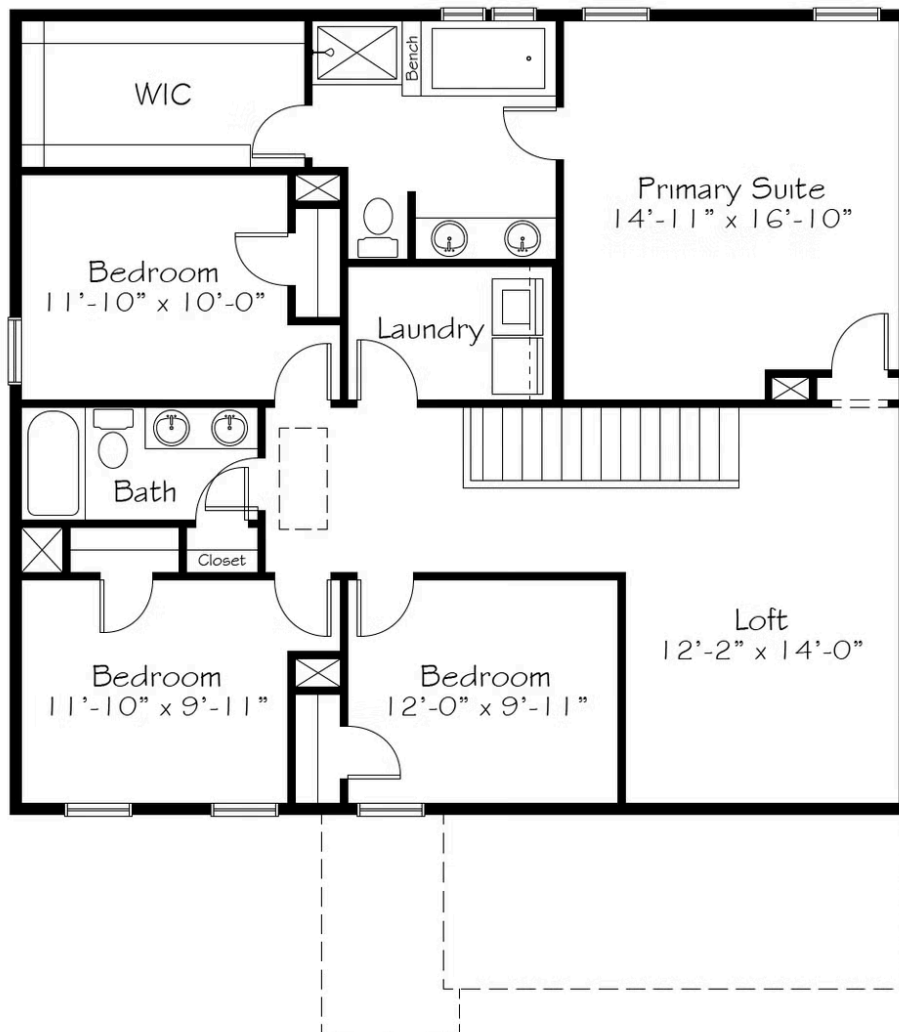
All square footage is approximate. Renderings are artist's conceptions and may vary slightly from the actual home. Homes may be built in reverse of plans shown, depending on site conditions. Minor architectural changes may be made occasionally at the option of the builder. Please contact your Sales Consultant for details.

## First Floor



All square footage is approximate. Renderings are artist's conceptions and may vary slightly from the actual home. Homes may be built in reverse of plans shown, depending on site conditions. Minor architectural changes may be made occasionally at the option of the builder. Please contact your Sales Consultant for details.

## Second Floor



All square footage is approximate. Renderings are artist's conceptions and may vary slightly from the actual home. Homes may be built in reverse of plans shown, depending on site conditions. Minor architectural changes may be made occasionally at the option of the builder. Please contact your Sales Consultant for details.