






Priced From
\$384,990

3 Elevations Available

-  1,718+ Sq. Ft.
-  3 Bedrooms
-  2.5 Bathrooms
-  2 Car Garage

Shoot represents the moment of action in Roshambo. When we choose which move to make, in this case which new home floor plan to choose. If you're looking for convenient living on the main floor, Shoot your shot. Shoot rolls deep with the primary suite on the main floor along with the laundry, open Family, Kitchen and Dining space. Upstairs wows with two additional bedrooms, a Buddy Bath that boasts double sinks, a light-filled loft space, and large storage closet.



A



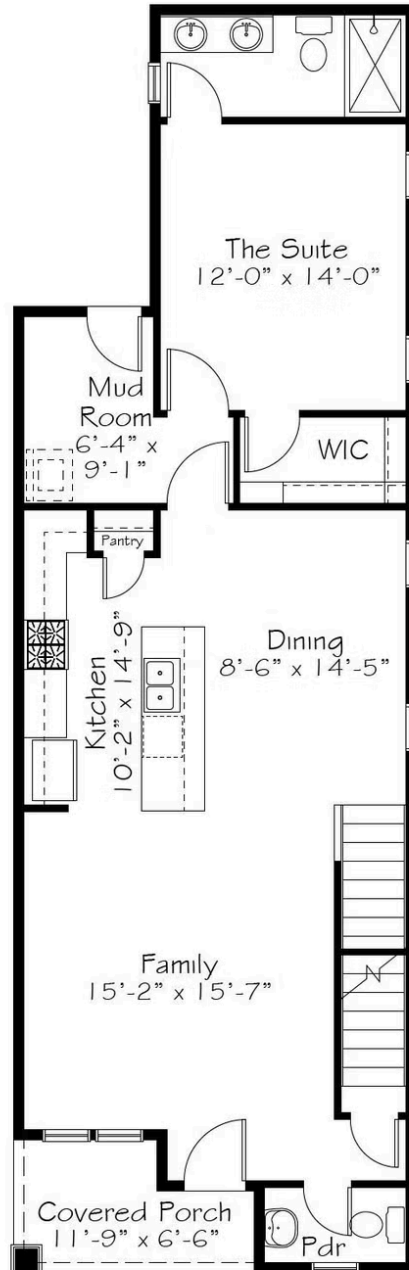
B



C

All square footage is approximate. Renderings are artist's conceptions and may vary slightly from the actual home. Homes may be built in reverse of plans shown, depending on site conditions. Minor architectural changes may be made occasionally at the option of the builder. Please contact your Sales Consultant for details.

First Floor



All square footage is approximate. Renderings are artist's conceptions and may vary slightly from the actual home. Homes may be built in reverse of plans shown, depending on site conditions. Minor architectural changes may be made occasionally at the option of the builder. Please contact your Sales Consultant for details.

Second Floor



All square footage is approximate. Renderings are artist's conceptions and may vary slightly from the actual home. Homes may be built in reverse of plans shown, depending on site conditions. Minor architectural changes may be made occasionally at the option of the builder. Please contact your Sales Consultant for details.