







Priced From
\$374,990

3 Elevations Available

-  **1,576+ Sq. Ft.**
-  **3 Bedrooms**
-  **2.5 Bathrooms**
-  **2 Car Garage**

Paper offers an open expanse on the first floor like a new sheet of looseleaf paper, ready to write the story that begins with a gathering at the oversized island. A cozy room in the front for dining and a larger space at the rear for entertaining friends or binge watching alone until the streaming service asks if you're still there. Upstairs a primary suite is sized for rest, reflection and relaxation. Two equally sized secondary bedrooms and a hall bath settle the score on whose room is bigger. No game of Roshambo needed. This Paper takes it all.



A



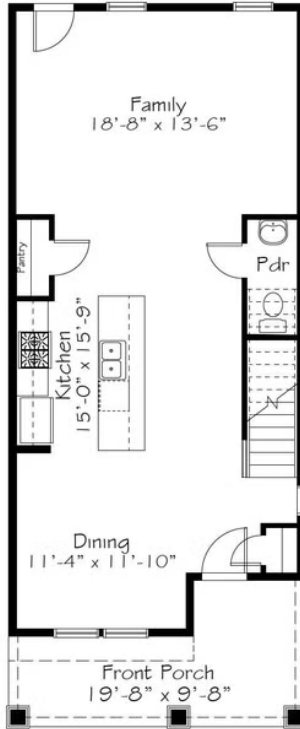
B



C

All square footage is approximate. Renderings are artist's conceptions and may vary slightly from the actual home. Homes may be built in reverse of plans shown, depending on site conditions. Minor architectural changes may be made occasionally at the option of the builder. Please contact your Sales Consultant for details.

First Floor



Second Floor

