

UNDER CONSTRUCTION



Home Priced At  
**\$599,990**

Plan: Comfort

Elevation: A

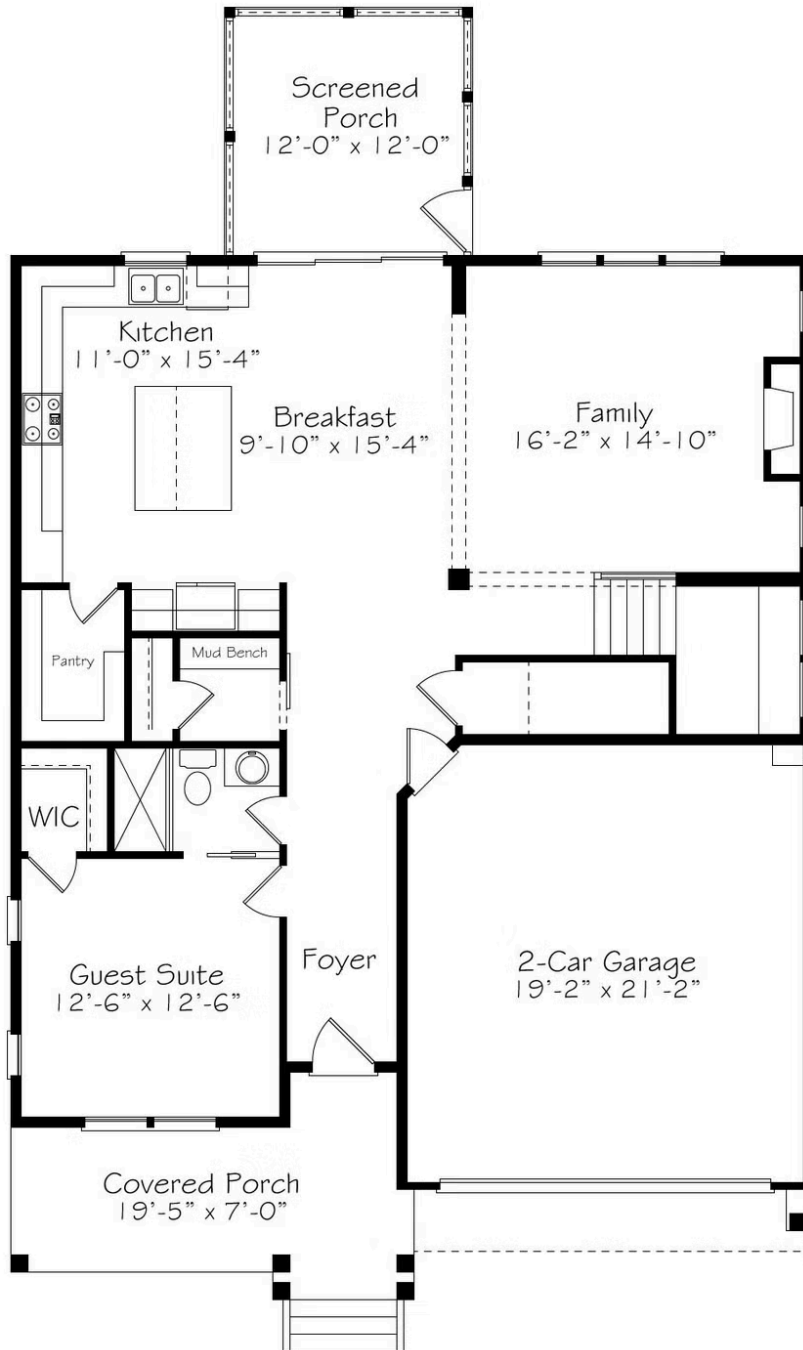
 2,784+ Sq. Ft.

 4 Bedrooms

 3.0 Bathrooms

Like its namesake, this plan will give you all the warm fuzzies. Spacious and inviting, this is a plan that hits its stride when it's packed with people - an oversized kitchen, walk-in pantry, flexible 1st floor Guest Suite. Room to keep everyone comfortable, no matter how many. Whether you find your comfort cooking a meal for your favorite people in the gourmet kitchen, or relaxing with your favorite beverage on the screened porch, this home is ready to be your happy place.

## First Floor



All square footage is approximate. Renderings are artist's conceptions and may vary slightly from the actual home. Homes may be built in reverse of plans shown, depending on site conditions. Minor architectural changes may be made occasionally at the option of the builder. Please contact your Sales Consultant for details.

## Second Floor



All square footage is approximate. Renderings are artist's conceptions and may vary slightly from the actual home. Homes may be built in reverse of plans shown, depending on site conditions. Minor architectural changes may be made occasionally at the option of the builder. Please contact your Sales Consultant for details.