







Priced From
\$516,990

3 Elevations Available

-  **2,784+ Sq. Ft.**
-  **4 - 5 Bedrooms**
-  **3.5 - 4 Bathrooms**
-  **2 Car Garage**

Like its namesake, this plan will give you all the warm fuzzies. Spacious and inviting, this is a plan that hits its stride when it's packed with people - an oversized kitchen, walk-in pantry, flexible 1st floor Guest Suite. Room to keep everyone comfortable, no matter how many.



A



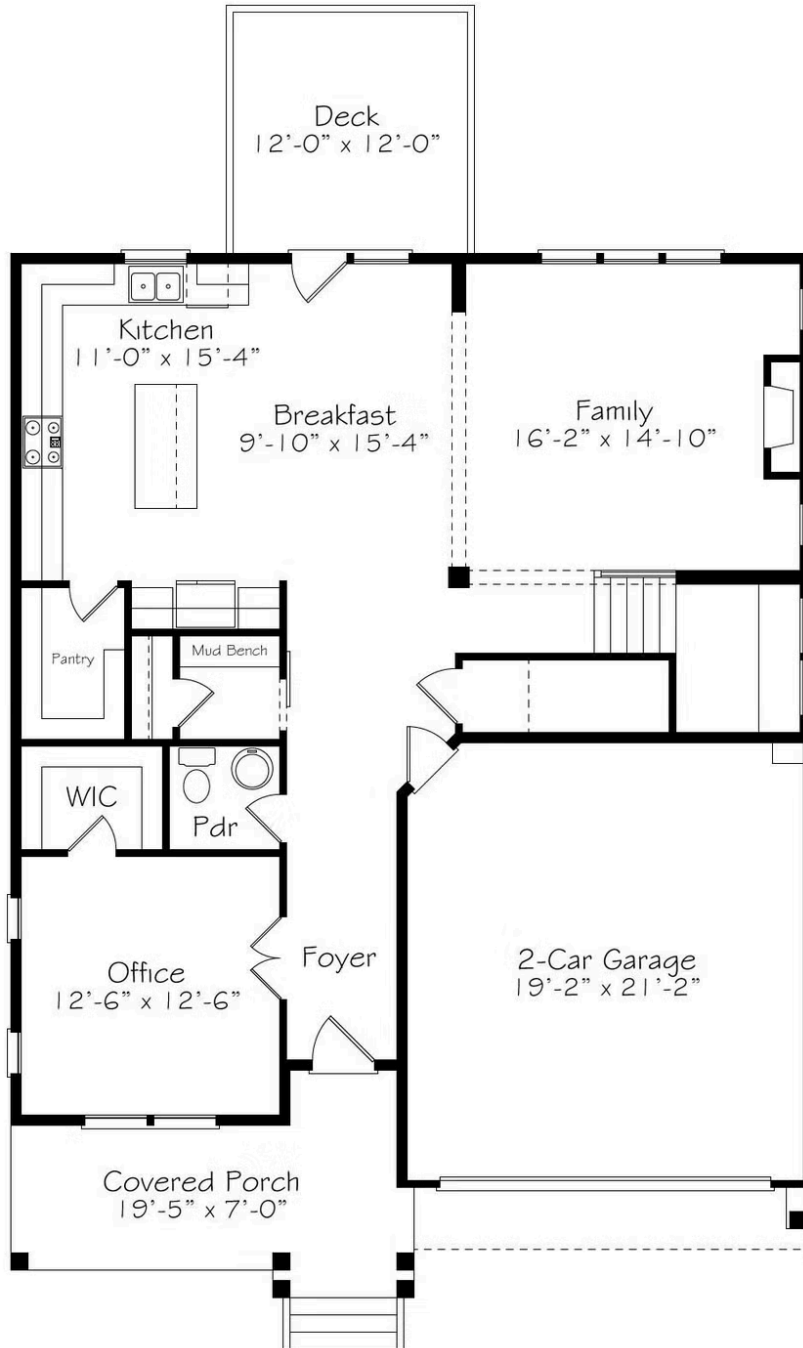
B



C

All square footage is approximate. Renderings are artist's conceptions and may vary slightly from the actual home. Homes may be built in reverse of plans shown, depending on site conditions. Minor architectural changes may be made occasionally at the option of the builder. Please contact your Sales Consultant for details.

First Floor



All square footage is approximate. Renderings are artist's conceptions and may vary slightly from the actual home. Homes may be built in reverse of plans shown, depending on site conditions. Minor architectural changes may be made occasionally at the option of the builder. Please contact your Sales Consultant for details.

Second Floor



All square footage is approximate. Renderings are artist's conceptions and may vary slightly from the actual home. Homes may be built in reverse of plans shown, depending on site conditions. Minor architectural changes may be made occasionally at the option of the builder. Please contact your Sales Consultant for details.