

MOVE-IN READY

Home Priced At
\$550,000

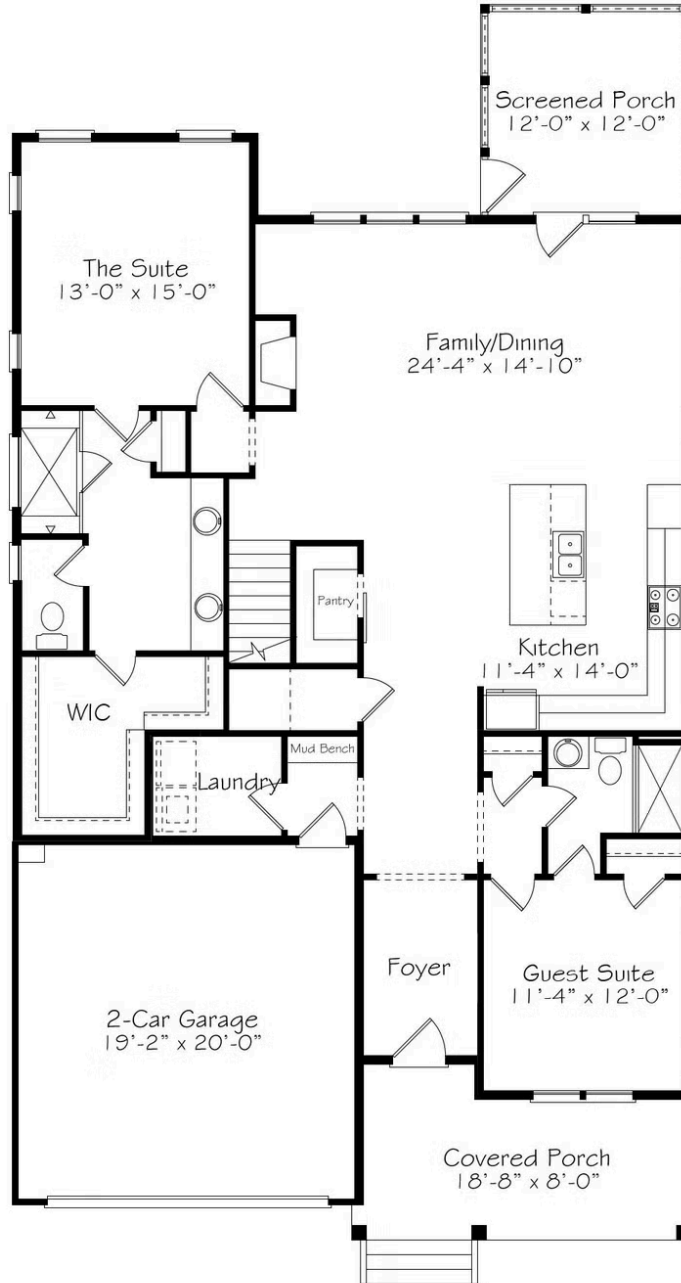
Plan: Beau

Elevation: A

 2,643+ Sq. Ft. 4 Bedrooms 3.0 Bathrooms

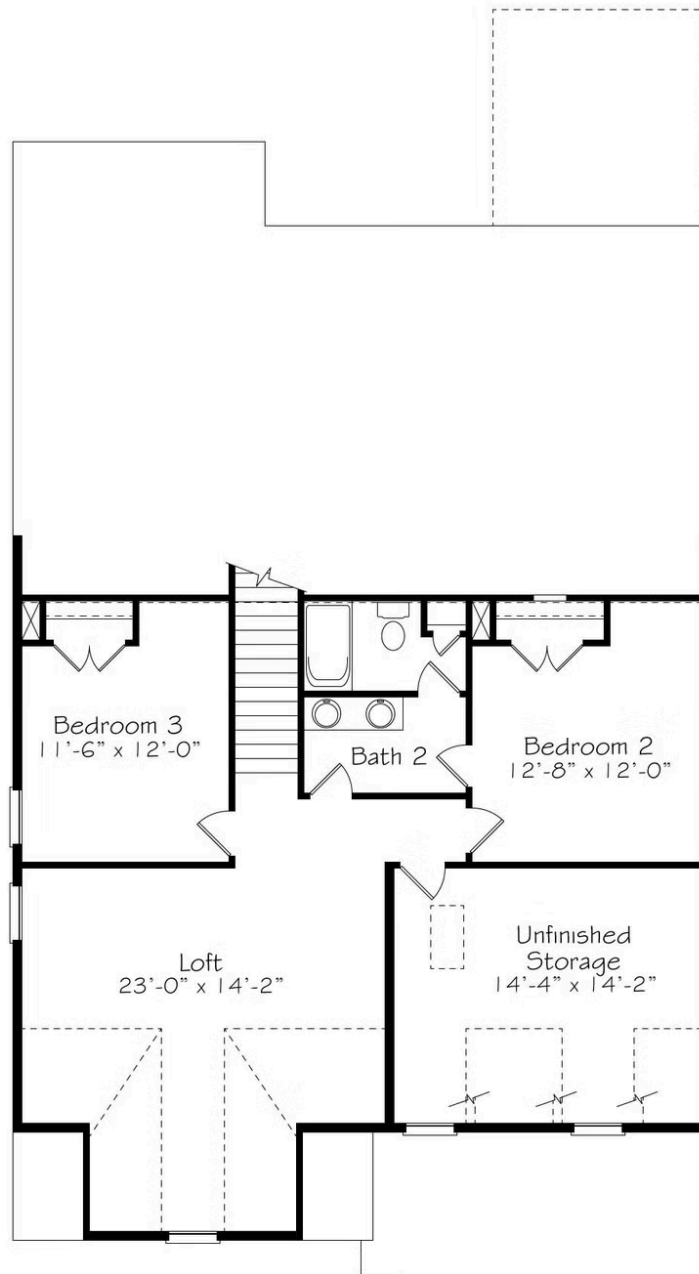
Like the best boyfriend you've ever had, this plan delivers. Main level living at it's very finest with an upgraded open kitchen with a large focal island, dining and living room complete with a cozy fireplace, lots of natural light and a screened porch, for when you're ready to move the party outside. Retreat to your first floor Primary suite with jaw-dropping en-suite and generous walk-in closet. Welcome your guests with an additional first floor suite. The 2nd floor is just what you need with two additional bedrooms, a loft and a huge amount of walk-in storage. This specific plan is available ONLY in the Wendell Falls community.

First Floor



All square footage is approximate. Renderings are artist's conceptions and may vary slightly from the actual home. Homes may be built in reverse of plans shown, depending on site conditions. Minor architectural changes may be made occasionally at the option of the builder. Please contact your Sales Consultant for details.

Second Floor



All square footage is approximate. Renderings are artist's conceptions and may vary slightly from the actual home. Homes may be built in reverse of plans shown, depending on site conditions. Minor architectural changes may be made occasionally at the option of the builder. Please contact your Sales Consultant for details.