

MOVE-IN READY



Home Priced At
\$725,000

Plan: Beau

Elevation: C

 3,032+ Sq. Ft.

 5 Bedrooms

 4.0 Bathrooms

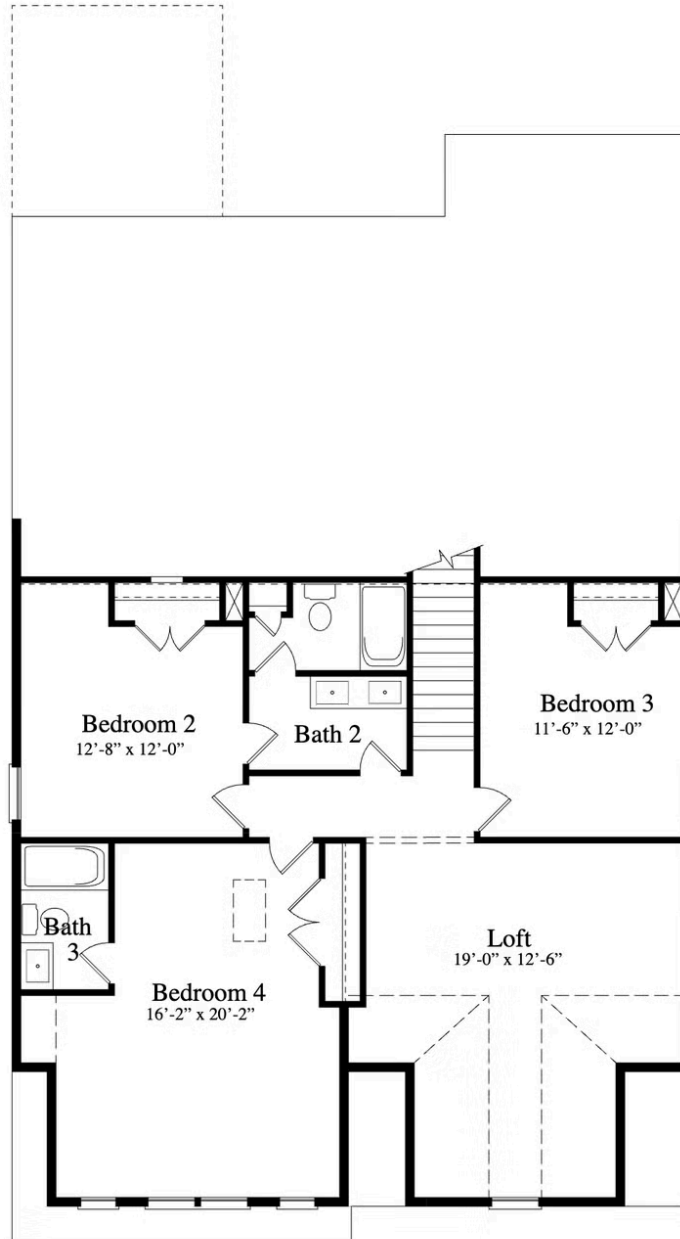
Previous Model Home with amazing upgrades! Like the best boyfriend you've ever had, this plan delivers. Main level living at it's very finest with a first floor Guest Suite. Gorgeous kitchen with oversized island, overlooking the family room featuring a 16' 4-panel sliding glass door leading out to an expansive screened porch. This home is perfect for gatherings! No matter how many people are in the home, everyone will have enough room to be comfortable. 2nd floor is just what you need with three additional bedrooms and a huge loft.

First Floor



All square footage is approximate. Renderings are artist's conceptions and may vary slightly from the actual home. Homes may be built in reverse of plans shown, depending on site conditions. Minor architectural changes may be made occasionally at the option of the builder. Please contact your Sales Consultant for details.

Second Floor



All square footage is approximate. Renderings are artist's conceptions and may vary slightly from the actual home. Homes may be built in reverse of plans shown, depending on site conditions. Minor architectural changes may be made occasionally at the option of the builder. Please contact your Sales Consultant for details.