



Priced From
\$511,990

3 Elevations Available

 **2,643+ Sq. Ft.**

 **4 - 5 Bedrooms**

 **3 Bathrooms**

 **2 Car Garage**

Like the best boyfriend you've ever had, this plan delivers. Main level living at it's very finest with the option to include a Guest Suite. The 2nd floor is just what you need with two additional bedrooms and a huge amount of walk-in storage. This specific plan is available ONLY in the Wendell Falls community.



A



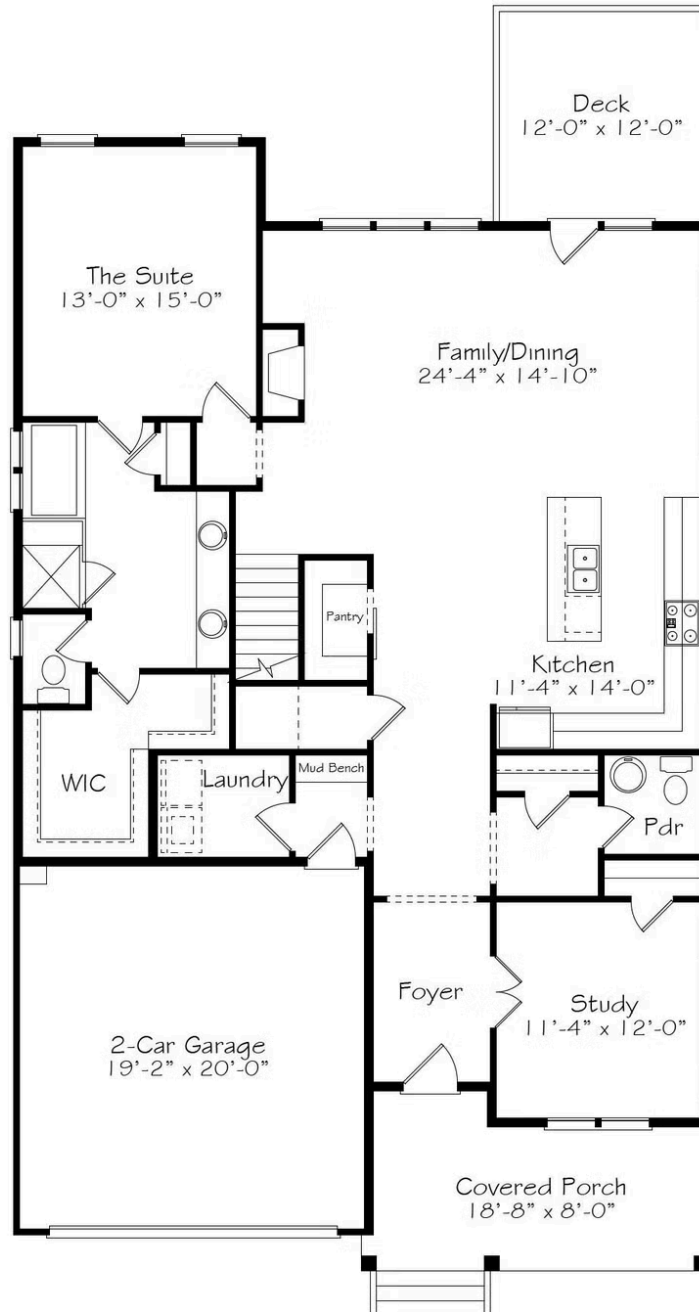
B



C

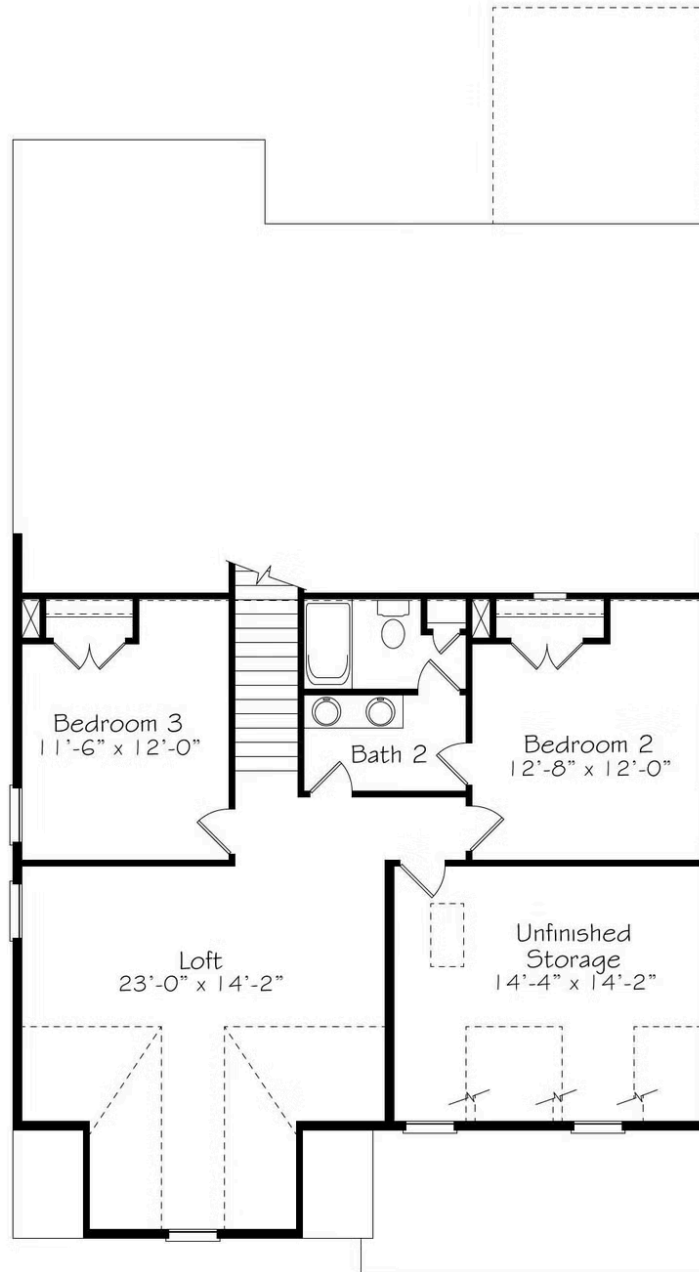
All square footage is approximate. Renderings are artist's conceptions and may vary slightly from the actual home. Homes may be built in reverse of plans shown, depending on site conditions. Minor architectural changes may be made occasionally at the option of the builder. Please contact your Sales Consultant for details.

First Floor



All square footage is approximate. Renderings are artist's conceptions and may vary slightly from the actual home. Homes may be built in reverse of plans shown, depending on site conditions. Minor architectural changes may be made occasionally at the option of the builder. Please contact your Sales Consultant for details.

Second Floor



All square footage is approximate. Renderings are artist's conceptions and may vary slightly from the actual home. Homes may be built in reverse of plans shown, depending on site conditions. Minor architectural changes may be made occasionally at the option of the builder. Please contact your Sales Consultant for details.