



Home Priced At
\$415,000

Plan: Barreto

Elevation: A

 2,522+ Sq. Ft.

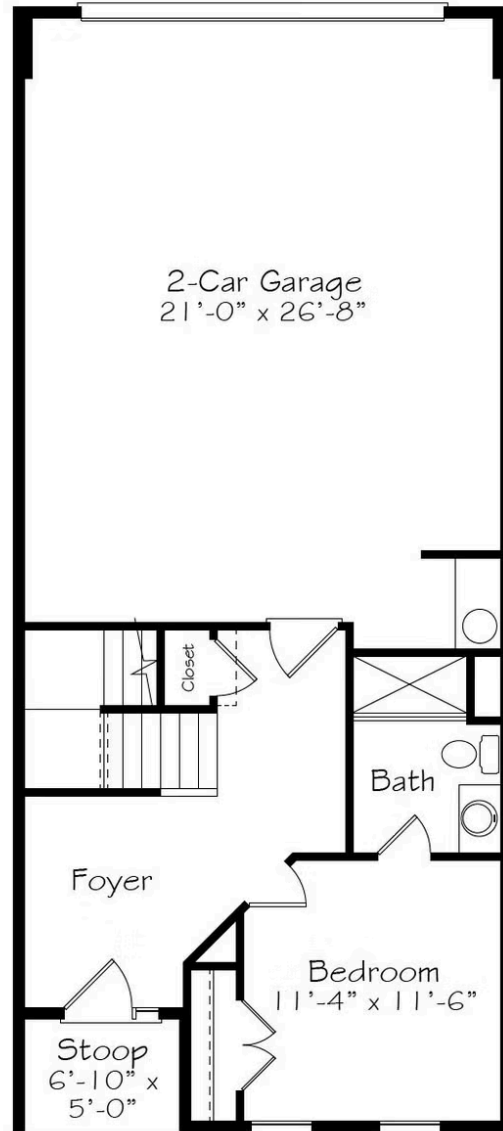
 4 Bedrooms

 3.5 Bathrooms

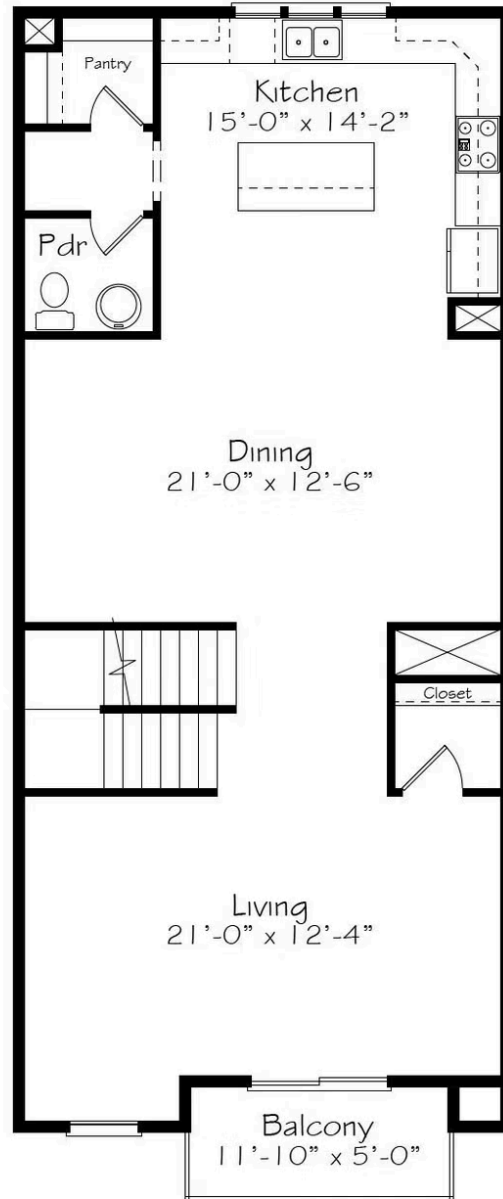
The Barreto is rightfully named and inspired by our Hero SFC Elis Barreto and Hero Home #22. This Hero Townhome - featuring our X's and O's curated interior package - stands three stories tall, and proud, with luxurious details that make you appreciate every day in this home. With a 2-car alley-load garage, ground floor bedroom & full bath, and open living space, the possibilities are not only endless but flexible for any lifestyle. Tucked away on the third floor is the primary suite, with two additional bedrooms, a spacious laundry room and ample closets!

All square footage is approximate. Renderings are artist's conceptions and may vary slightly from the actual home. Homes may be built in reverse of plans shown, depending on site conditions. Minor architectural changes may be made occasionally at the option of the builder. Please contact your Sales Consultant for details.

First Floor



Second Floor



Third Floor

