



Priced From  
**\$380,000**

3 Elevations Available

-  1,580+ Sq. Ft.
-  3 Bedrooms
-  2.5 Bathrooms
-  2 Car Garage

Inspired by those unwilling to settle for the status quo, the Activist plan welcomes you home to restore your energy and reconnect with your purpose. A free flowing first floor anchored by an enormous kitchen island allows connectivity at every turn. Front to back and side to side, this kitchen is command central. Upstairs the space divides nicely to accommodate a roomy primary suite, complete with en-suite bath and double closets on one side and two equally sized secondary bedrooms with hall bath and laundry closet on the other. Room for everyone to rest, recover and rally for the next day.



A



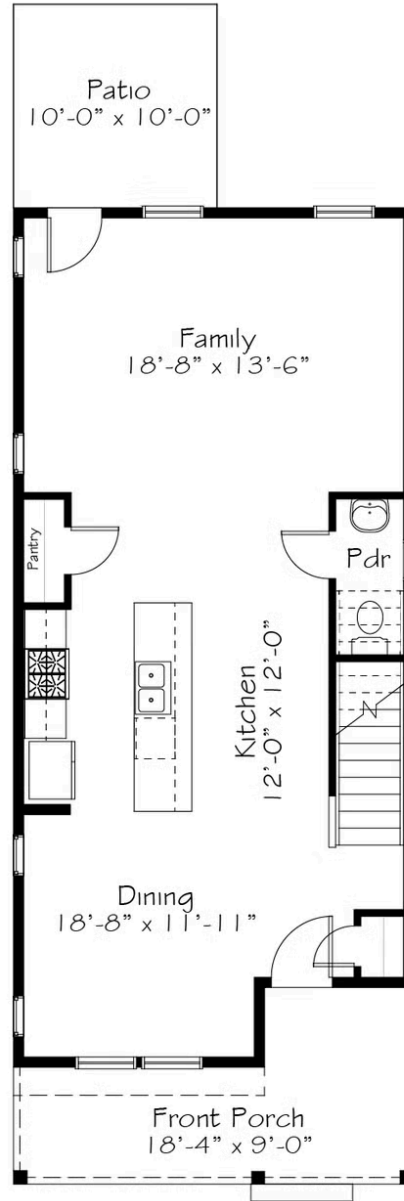
B



C

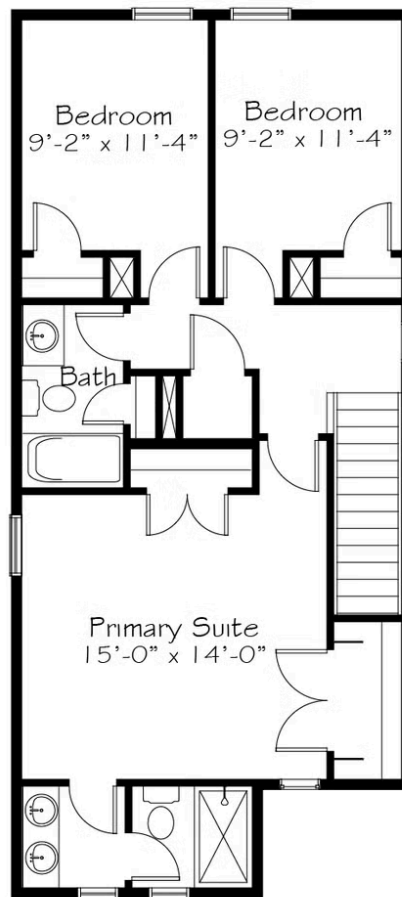
All square footage is approximate. Renderings are artist's conceptions and may vary slightly from the actual home. Homes may be built in reverse of plans shown, depending on site conditions. Minor architectural changes may be made occasionally at the option of the builder. Please contact your Sales Consultant for details.

## First Floor



All square footage is approximate. Renderings are artist's conceptions and may vary slightly from the actual home. Homes may be built in reverse of plans shown, depending on site conditions. Minor architectural changes may be made occasionally at the option of the builder. Please contact your Sales Consultant for details.

## Second Floor



All square footage is approximate. Renderings are artist's conceptions and may vary slightly from the actual home. Homes may be built in reverse of plans shown, depending on site conditions. Minor architectural changes may be made occasionally at the option of the builder. Please contact your Sales Consultant for details.