





Doorbells & Sleighbells

Havenbrooke



Priced From
\$384,990

3 Elevations Available

-  2,513+ Sq. Ft.
-  4 - 5 Bedrooms
-  2.5 - 4 Bathrooms
-  2 Car Garage

If childlike anticipation had a signature sound, it might be a Sleigh bell. Immediately transported to scenes of magical nights inside a decorated home with warm family gatherings. You might hear the ping of the doorbell, excited to meet someone new or see a friend for the first time in a while. It's possible we've developed a renewed sense of appreciation for these moments. With a front door focal point, this plan builds anticipation for a well balanced life and houses extra spaces sprinkled evenly between floors. Here's to the sounds of anticipation to come in this home!



A



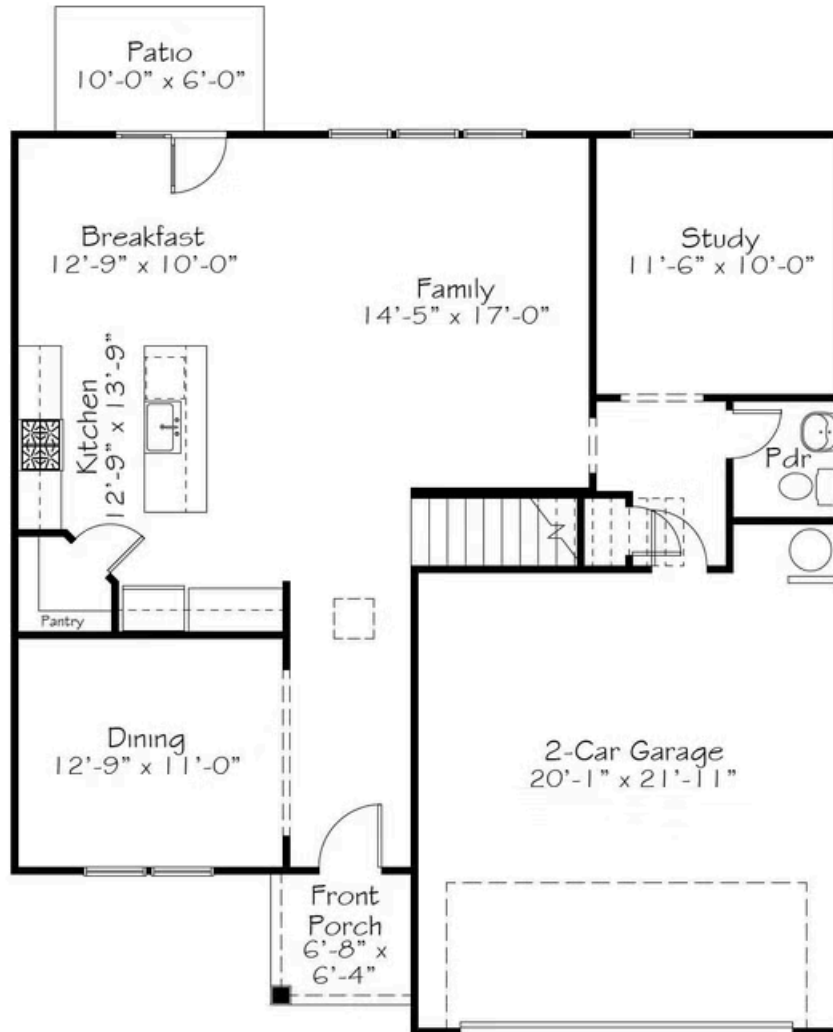
B



C

All square footage is approximate. Renderings are artist's conceptions and may vary slightly from the actual home. Homes may be built in reverse of plans shown, depending on site conditions. Minor architectural changes may be made occasionally at the option of the builder. Please contact your Sales Consultant for details.

First Floor



All square footage is approximate. Renderings are artist's conceptions and may vary slightly from the actual home. Homes may be built in reverse of plans shown, depending on site conditions. Minor architectural changes may be made occasionally at the option of the builder. Please contact your Sales Consultant for details.



Single Family

Doorbells & Sleighbells

Havenbrooke

NEW HOME SPECIALIST

Call Us @ 9842173220

SayHello@GarmanHomes.com

Second Floor

All square footage is approximate. Renderings are artist's conceptions and may vary slightly from the actual home. Homes may be built in reverse of plans shown, depending on site conditions. Minor architectural changes may be made occasionally at the option of the builder. Please contact your Sales Consultant for details.