






Call for Price

3 Elevations Available

-  1,931+ Sq. Ft.
-  3 Bedrooms
-  2.5 Bathrooms
-  2 Car Garage

All it takes is a sidewalk and some chalk, yet Hopscotch is still a classic and favorite - just like the footprint of this home. With the Primary Suite on the first level, tucked away from a completely open Family, Kitchen and Dining space, this home is perfect for entertaining or cozying up. Upstairs wows with two additional bedrooms, mega closet space, and a light-filled loft space. The only thing you'll be skipping in this home is fussy layouts - we kept it easy and effortless.



A



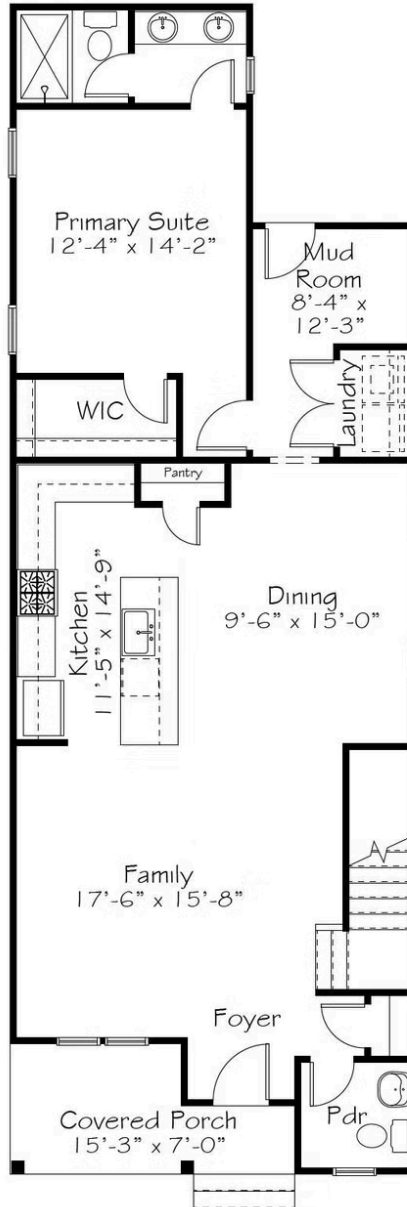
B



C

All square footage is approximate. Renderings are artist's conceptions and may vary slightly from the actual home. Homes may be built in reverse of plans shown, depending on site conditions. Minor architectural changes may be made occasionally at the option of the builder. Please contact your Sales Consultant for details.

First Floor



Second Floor



All square footage is approximate. Renderings are artist's conceptions and may vary slightly from the actual home. Homes may be built in reverse of plans shown, depending on site conditions. Minor architectural changes may be made occasionally at the option of the builder. Please contact your Sales Consultant for details.