

Castle in Brooklyn

Available in 1 Communities



Call for Price

3 Elevations Available

 2,164+ Sq. Ft.

 3 - 4 Bedrooms

 2.5 - 3 Bathrooms

 2 Car Garage

Name a more revolutionary trio in the early days of Hip Hop than The Beastie Boys. We'll wait. But while we're waiting let's tell you a little bit about this plan inspired by the one and only Brass Monkey. The main floor is both open and purposeful, connected and private. The large front porch entry connects you to the kitchen on one side and the first floor study on the other, which makes it a choose your own adventure situation. Beyond the kitchen, the living and dining spans the entire width of the rear of the home. Upstairs two bedrooms and a loft are tucked towards the front of the home, along with the laundry and hall bath, giving the primary suite a little more room to lounge. And lounge it does, from the generously sized bedroom, to the bath and walk in closet, this one might make you feel like you rock well in your Castle in Brooklyn that's where you dwell.



A



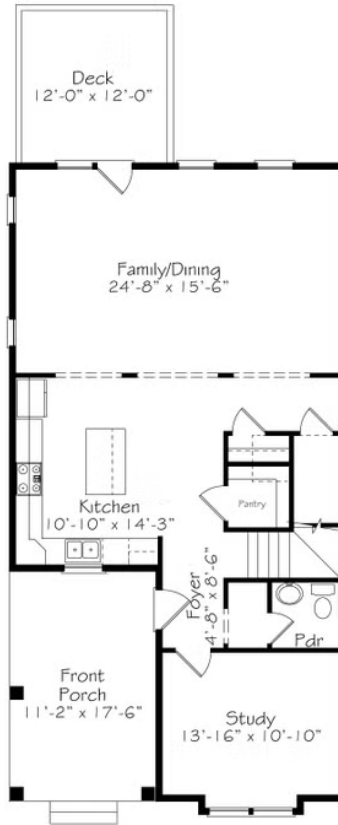
B



C

All square footage is approximate. Renderings are artist's conceptions and may vary slightly from the actual home. Homes may be built in reverse of plans shown, depending on site conditions. Minor architectural changes may be made occasionally at the option of the builder. Please contact your Sales Consultant for details.

First Floor



Second Floor

