



Priced From
\$484,990

3 Elevations Available

 1,820+ Sq. Ft.

 3 Bedrooms

 2.5 Bathrooms

Scissors makes a few deep cuts and flips the script on Paper, with the family room at the front of the home, just behind the front porch for seamless indoor-outdoor living and connectivity. The kitchen stays central for optimal entertaining with the dining tucked into the rear of the home. The second floor sprawls with three bedrooms, a Buddy Bath and double walk-in closets for the Primary bedroom. If you find yourself wanting to run with this plan, never fear, unlike other Scissors, this one is safe for running.



A



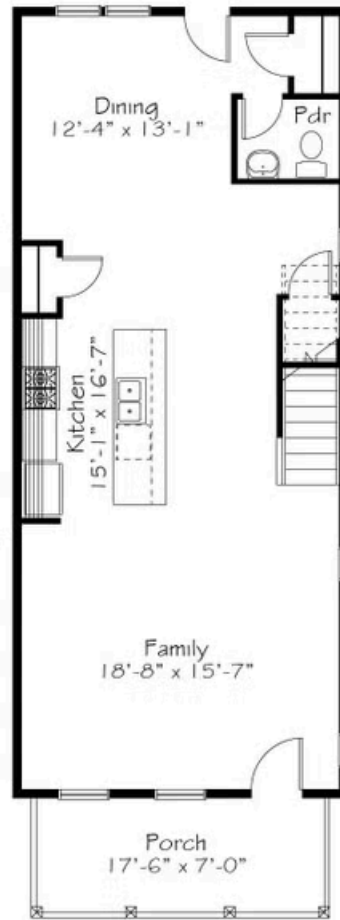
B



C

All square footage is approximate. Renderings are artist's conceptions and may vary slightly from the actual home. Homes may be built in reverse of plans shown, depending on site conditions. Minor architectural changes may be made occasionally at the option of the builder. Please contact your Sales Consultant for details.

First Floor



All square footage is approximate. Renderings are artist's conceptions and may vary slightly from the actual home. Homes may be built in reverse of plans shown, depending on site conditions. Minor architectural changes may be made occasionally at the option of the builder. Please contact your Sales Consultant for details.

Second Floor